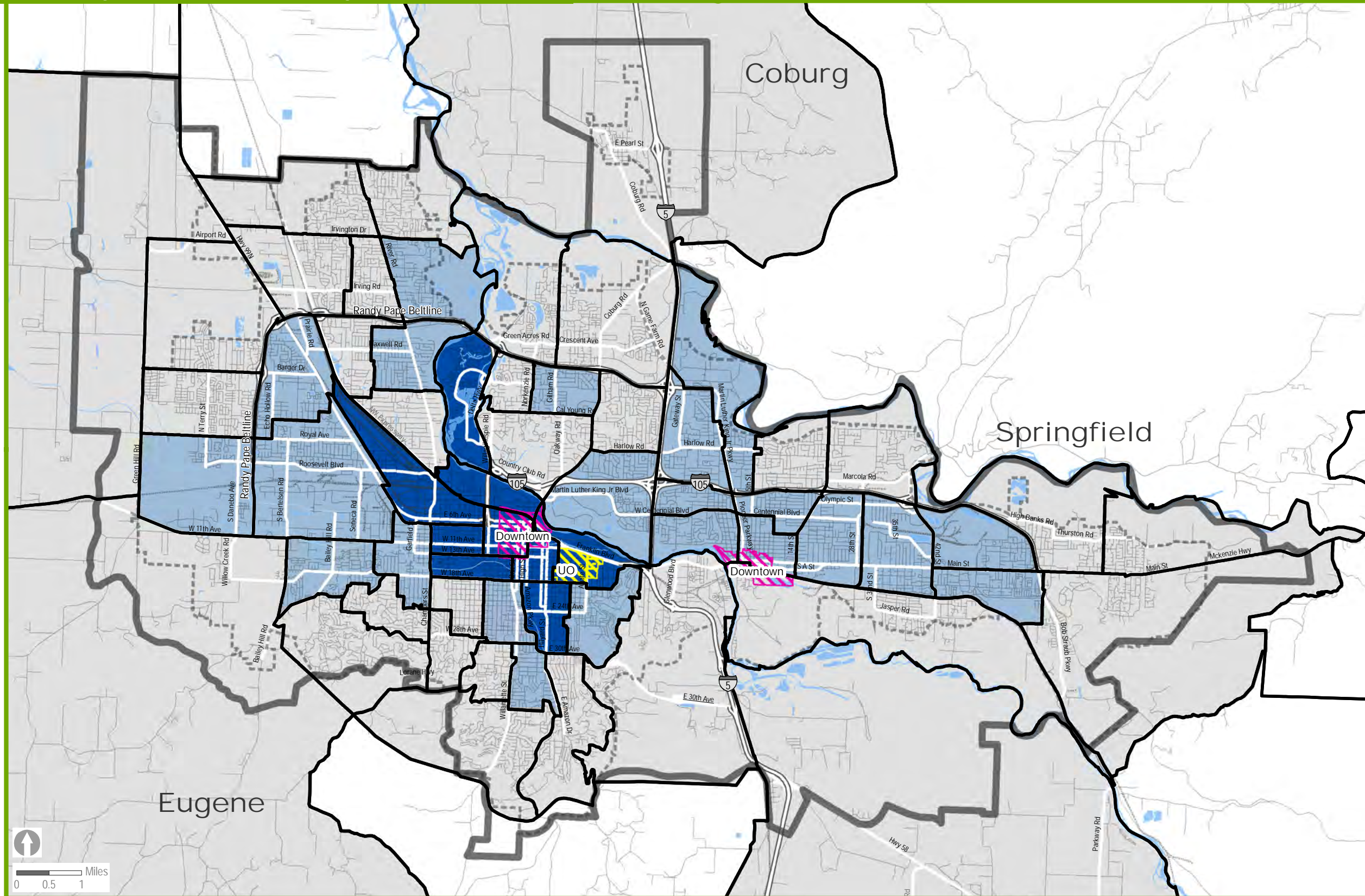


# Equity & Opportunity Assessment Housing Access

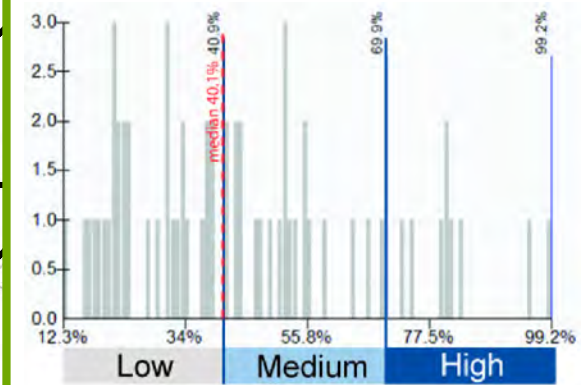
## Renter Occupied Households



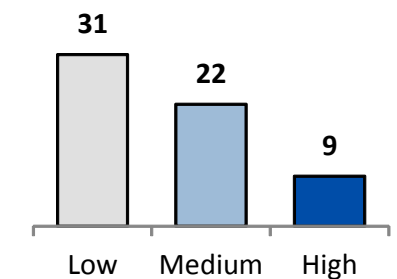
This map shows the percent of occupied households that are renter occupied. About 45% of housing in the Metropolitan Planning Organization area census tracts are renter occupied.

Data for this map is from the Census 2010 which represents a full count of households.

The full range of data for each map has been divided into thirds to create low, medium, and high percentage categories. A histogram is also included to show that the data is not necessarily distributed equally across these three categories. About 26% of renter households are in the top 9 tracts in the highest percentage category.



The chart below shows the number of tracts in the Metropolitan Planning Organization Area that have low, medium, or high percentages of renter occupied households.



Map date: 8/28/13 Map data: U.S. Census Bureau, Census 2010, Table H4  
 Caution: This map is based on imprecise source data, subject to change, and for general reference only.  
 The work that provided the basis for this map was supported by funding under an award with the U.S. Department of Housing and Urban Development. The substance and findings of the work are dedicated to the public. The author and publisher are solely responsible for the accuracy of the statements and interpretations contained in this publication. Such interpretations do not necessarily reflect the views of the Government.

- Census 2010 Tracts
- Metropolitan Planning Organization Area boundary
- Urban Growth Boundaries

- Percentage of Households that are Renter Occupied**
- Low: 12.3% - 40.9%
  - Medium: 41% - 69.9%
  - High: 70% - 99.2%